

# Primary Care Teaching

## 2025-26



GP1

GP2

GP3

GP4

GP5

## Dear Teachers!

It is over eight years since Bristol Medical School launched its “new” curriculum. That new design saw a markedly enhanced presence for Primary Care. In 2015 a typical student would experience 64 half days of general practice over their five years. In 2025 the figure is 142 half days.

When we made these changes there was a lot of uncertainty over whether or not we’d be able to recruit sufficient GP teachers to staff such a programme. Recruitment remains challenging in some areas, but overall we have been amazed by how popular undergraduate teaching has become—for now at least!

In some areas we will not be able to offer you all the teaching you are able to provide. Mel Butler and her team are working hard to divide up teaching opportunities equitably. We’ve paused the recruitment of new “Academy Packages” in most areas and reduced the typical cohort from x6 to x4 students. This should help.

With such expansion, some worried that the quality of our teaching would diminish. But no, the reverse seems to be true. Student satisfaction with your teaching is higher than ever. For instance the *average* rating by students (out of 5) for teacher enthusiasm in Year 1 was 4.96. In Y3 the average score for “welcomed by your practice” was 4.90. Students nominate you in droves for “teacher of the year” awards.

So what of 2025-2026? Teaching opportunities are roughly the same as for the current year. We’ve tried to make the teaching offers for each year (GP1—GP5) as clear as possible. You’ll notice that half-day teacher workshops are part of the package as we seek to keep, even experienced teachers, up to date with developments.

Teaching adds interest to the working week, keeps us on our toes and diversifies our income stream. I feel confident 2025-2026 will see Primary Care continue to take a leading role shaping well-rounded, *generalist*, graduates for mother NHS.



**Professor Trevor Thompson**

Head of Primary Care Teaching



BRISTOL MEDICAL SCHOOL

1<sup>st</sup> Floor, 5 Tyndall Avenue

BRISTOL, BS8 1UD

**Centre for Academic Primary Care  
Primary Care Teaching Office**

T +44 (0)117 455 0031

[phc-teaching@bristol.ac.uk](mailto:phc-teaching@bristol.ac.uk)

<http://www.bristol.ac.uk/primaryhealthcare/>

GP1

GP2

GP3

GP4

GP5

## How to use this document

The first page is aimed at those who are new to teaching. Then there is an introduction to each year from the year leads followed by the infographic that summarises teaching in that year. The introduction contains the link to complete the teaching survey. **The deadline for responses is 31st May.** In previous years we have offered teaching packages, however at the moment we have no capacity for additional teaching packages.

## Payment

This year we are pleased to offer an increase in our payment rate across all five years. Further payment details are on each year's infographic.

## Workshops

Each year we put on a programme of teacher workshops for all curriculum years. We expect GPs who are new to teaching to attend the relevant year workshop and experienced GP teachers should attend every three years.

## Thank you

A huge thank you to everyone who has continued to support our students over the last year. You are all amazing!

### Summary of Key Changes for 25-26

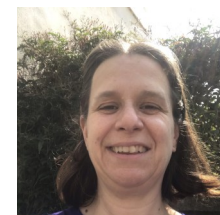
- For the first time in a decade, there are no major changes!



*Simon Thornton*

**Dr Simon Thornton**

GP Engagement Lead



*M. Butler*

**Mrs Melanie Butler**

Primary Care Teaching Manager

## Links to teaching surveys:

[Years 1&2](#)

[Year 3](#)

[Year 4](#)

[Year 5](#)

# New to teaching?

If you're new to teaching Bristol medical students, this section is for you.

GP1

GP2

GP3

GP4

GP5

## Why teach?

- GPs find teaching students fulfilling and enjoyable
- It helps GPs and practice staff stay on their toes and up to date
- Being a teaching practice helps recruit new doctors
- It provides an opportunity to promote a career in general practice
- Medical students give the practice professional kudos in the eyes of patients
- Financial compensation for teaching is increasingly attractive and diversifies income
- Teachers value being part of the wider community of teachers and associated with a major university

## What sorts of teaching can I do?

There are different styles of teaching across the five years including small group tutorials, directly observing students consulting, and having students observe you consult. There are workplace based assessments that some students will need to complete and if you are interested, you can help with end of year exams.

## When can I teach?

Each year we recruit around April/May for the following September. The academic year usually runs from September to June. Don't worry if you've missed the recruitment deadline, though, as opportunities to teach arise throughout the year. If you're interested, email [phc-teaching@bristol.ac.uk](mailto:phc-teaching@bristol.ac.uk)

## How am I supported?

Each year has accessible GP year leads. In the Gloucestershire and Somerset region, you can contact one of our [community GP leads](#). We run a programme of workshops for new and experienced teachers as well as providing detailed handbooks and regular email updates. All this information and more can be found on our website, <https://www.bristol.ac.uk/primaryhealthcare/teaching/>

*"Amazing experience - this placement really changed my view and perception of what GP is all about"*

- BRISTOL MEDICAL STUDENT

## Welcome to Years 1 and 2

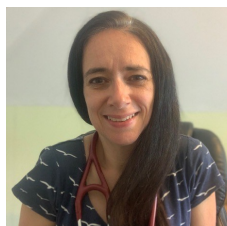
We warmly invite you to teach Years 1 and/or 2 of the medical undergraduate programme. Students are Bristol-based so to teach in these years we need practices which are in, or close to, Bristol. Students' feedback on their early patient contact and exposure to general practice continues to be overwhelmingly positive. We know that you really enjoy this teaching too. The infographics on the following pages provide an overview of what's involved, including the dates.

Students are taught in groups of up to 6. The main aim of the placement is for students to get patient contact and opportunities to practice developing their consulting and clinical skills. The sessions consist of a mix of meeting patients, observing and participating in consultations and group reflection and discussion. Detailed teaching plans are provided to enable you to make links with the students' learning at the university. We will be running a teacher workshop in September. We will communicate regularly, and support you throughout the teaching block.

We are happy to answer any questions.

If you're interested, please let us know your availability for GP1 and GP2 by completing the [online link](#).

With best wishes



*Lucy Jenkins*

**Dr Lucy Jenkins**

Year 1 GP Lead



*Jessica Buchan*

**Dr Jessica Buchan**

Year 2 GP Lead



Some student quotations:

*GP placements are incredibly valuable at such an early stage and give lots of insight. Thank you!*

*I found that our GP placements were the most interesting part of FOM. Our GP tutor was really engaged and keen to make the experience as interesting as possible and it also enabled us to contextualise some of our learning.*

GP1

GP2

GP3

GP4

GP5



# Year 1 General Practice Placement

## Quick Reference Guide 2025-26

For more information on each year, visit our website: <https://www.bristol.ac.uk/primaryhealthcare/teaching/>



.....

In Year 1, students have sessions in General Practice on a Thursday morning or afternoon. These sessions are approximately fortnightly. They form part of a course called Effective Consulting which explores clinical reasoning, clinical communication and clinical skills. Effective Consulting is integrated into students' fortnightly case-based learning cycles.

.....

### How the placement works

Up to 6 students per placement. You can choose whether they come out on a Thursday morning or afternoon. In Year 1, students are Bristol based and so their placements tend to be at GP practices in, or very close to, Bristol. The course is split into two parts: Foundations of Medicine and Human Health and Wellbeing, although the structure of the sessions in GP remains the same.

### Year 1 Key Facts

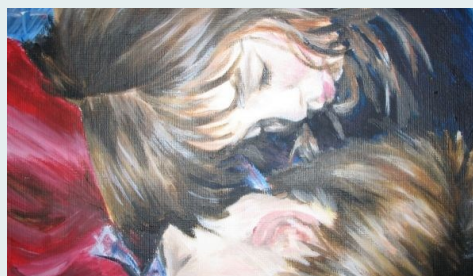
- Thursdays (AM or PM)
- Payment: £432/session
- 4-6 students per group
- BNSSG/ Central Bath practices only
- Teach 13 sessions

### Foundations of Medicine

From October to December, students attend regularly on 3 occasions as part of an introductory course called Foundations of Medicine which introduces them to the healthcare environment and talking with patients and clinicians. In the first two sessions, you get to know your students and all interview a patient in the surgery. In the third session, half the students sit in on a reduced surgery whilst the other students meet a patient (home visit or in practice) to talk about their healthcare experiences. The session ends with a debrief of the students' clinical encounters.

### Suggested Summary Timetable

9:00 - 9:15	Catch up
9:15 - 11:15	Reduced surgery of 4-6 patients with some students observing. Other students meet patients
11:15 - 12:00	Debrief

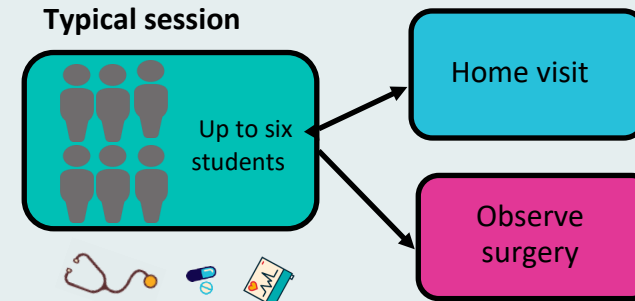


'Brother and Sister' by Sarah Wake, Year 1 Medical Student

### Human Health and Wellbeing

In January, the students start their case based learning and their fortnightly clinical contact alternates between primary and secondary care. They come out to General Practice for a further 3 or 4 sessions on a monthly basis, focussing on a different case or consultation skill each time. See overleaf for details of the themes and dates.

### Typical session



### Payment

We would like you to teach for 13 sessions which is two groups of students over the year.

For up to six students for 13 sessions, the total payment to the practice is £5,616.





# Teaching Dates (Thursdays) and Topics



Clinical contact in Foundations of Medicine – teach 3 sessions to each group	
02-Oct-25	Patients and health (group A)
09-Oct-25	Patients and health (group B)
23-Oct-25	Doctor-patient relationship (A)
06-Nov-25	Doctor-patient relationship (B)
20-Nov-25	Professionals and health (A)
04-Dec-25	Professionals and health (B)
Clinical contact in Human health and Wellbeing – teach 4 sessions to group A and 3 to group B	
22-Jan-26	Musculoskeletal system (A)
05-Feb-26	Cardiovascular system (B)
19-Feb-26	Respiratory system (A)
19-Mar-26	Neurological system (B)
23-Apr-26	Gastrointestinal system (A)
07-May-26	Urinary system (B)
21-May-26	Endocrine system (A)

## Teacher Development

Year 1 & 2 Workshop: In person on Thursday  
18-Sep-25, Time: 09.30-15.00

## Key

Stream A

Stream B

## Year 1 Frequently asked questions

Can more than one GP deliver the teaching?	Yes, although we would prefer no more than two regular teachers per group.
Can I do more than 13 sessions?	Yes, if your practice is able to take a group on a Thursday morning <i>and</i> afternoon or two sessions simultaneously eg two morning groups. If this is the case, then two GPs would be needed, one for each group.
I am a locum GP, can I teach Year 1?	Yes. However, we are only able to pay money to practices, not individual GPs. You would also need to be able to arrange suitable patients for the students to visit.
How can I find out more information about Year 1?	Visit the year 1 teaching page of our website at: <a href="https://www.bristol.ac.uk/primaryhealthcare/teaching/teaching-in-practice-by-year/">https://www.bristol.ac.uk/primaryhealthcare/teaching/teaching-in-practice-by-year/</a>



Diagnosis: Loneliness

By Weiken Tan, Year 1 Medical  
Student





# Year 2 General Practice Placement

## Quick Reference Guide 2025-26

For more information on each year, visit our website: <https://www.bristol.ac.uk/primaryhealthcare/teaching/>



In Year 2, students have 5 or 6 sessions in General Practice in a group of up to 6 students on a Thursday morning or afternoon. This is on alternate weeks to the Year 1 student placements. These sessions are approximately fortnightly. They form part of the Effective Consulting course and focus on clinical reasoning, clinical communication and clinical skills.

Each session in General Practice is themed around a system or symptom.

### Suggested Summary Timetable

AM	PM	
09:00	14:00	Register, "check in", learning objectives
09:30	14:30	Interview/examine patient 1
10:15	15:15	Break
10:25	15:25	Interview/examine patient 2
11:10	16:10	Break
11:20	16:20	Debrief, questions, tutor feedback
11:50	16:50	Wrap-up and close

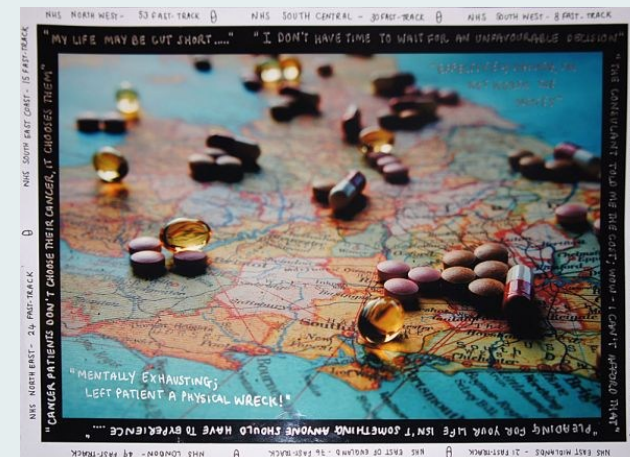
### Your choices

Ideally a practice will take one group in Stream A and one in Stream B, covering all 11 dates, either in the morning or the afternoon.



### Hands on Practice

This is a key time for students to be hands on and practice their skills. They love to be talking to patients and applying their examination and clinical skills. It's important to set up the sessions at the beginning to make it a "safe" space where they know it's okay to ask questions, make mistakes, and have another go.



**Postcodes: are they a prescribing destiny?** By: Rachel Murphy, Year 1 Medical Student

### Payment

For up to six students for eleven sessions, the total payment to the practice is £4,752.

### Year 2 Key Facts

- Thursdays (AM or PM)
- Payment: £432/session
- Up to 6 students per group
- BNSSG/ Bath practices only





## Teaching Dates (Thursdays) and Topics

Year 2 Placement Dates	
Date	Topic
30-Oct-25	Skin and Integument
13-Nov-25	Body Defence
27-Nov-25	Pharmacology and Therapeutics
11-Dec-25	Anaemia, Blood and Clotting
15-Jan-26	Chest Pain
29-Jan-26	Breathlessness
12-Feb-26	Abdominal Symptoms
12-Mar-26	Urinary symptoms and thirst
16-Apr-26	Joint pain including back pain
14-May-26	Headache
28-May-26	Collapse

Year 2 Frequently asked questions	
Can more than one GP deliver the teaching?	We would prefer one teacher to deliver the teaching but are aware that colleagues may need to cover for absences.
How should I structure the teaching sessions?	A Year 2 handbook is available on our website at: <a href="https://www.bristol.ac.uk/primaryhealthcare/teaching/teaching-in-practice-by-year/">https://www.bristol.ac.uk/primaryhealthcare/teaching/teaching-in-practice-by-year/</a> You will be sent plans and ideas for each session two weeks in advance.



Teacher Development
Year 1 & 2 Workshop: In person on Thursday 18-Sep-2025

Key
Stream A
Stream B

## Welcome to Year 3

We are delighted to offer you the opportunity to teach GP3 for the next academic year.

In GP3 we strive to offer a very supportive teaching environment. As well as fortnightly email updates and online drop in sessions at the start of each block of teaching, the year lead is available throughout the year by email and phone to troubleshoot any questions or queries.

We hope that the information on the following pages answers most of your questions but if you have any more please do not hesitate to contact us.

Please let us know your availability for teaching GP3 by completing the [online link](#).

With Best Wishes,



A handwritten signature in black ink, appearing to read 'C Conway'.

**Dr Ciaran Conway**

Year 3 GP Lead



### GP3 Highlights

- **More clinical exposure for our students**
- **Detailed teaching plans to make delivery easier**
- **Feedback for each practice promptly after each block**
- **Flexible day structure to suit your practice.**

GP1

GP2

GP3

GP4

GP5



# Year 3 General Practice Placement

## Quick Reference Guide 2025-26

For more information on each year, visit our website: <https://www.bristol.ac.uk/primaryhealthcare/teaching/>



.....

**In Year 3, students have 16 Tuesdays in General Practice. This placement consists of two blocks, each of eight days. All eight of these are in practice and students attend in groups of up to 6.**

.....

### How the placement works

Each day in practice is split into a number of parts and timings can be adjusted to suit your practice. An example timetable below demonstrates a typical day structure. It's important to note that the timings of the day are suggestions only and can be edited to suit your surgery. Group sizes will vary (but will be no greater than 6). During the day students will be split into two groups and come together at the start and end.

Example Timetable for the day		
08:30 –09:30	GP Preparation time	
09:30 -11:00	Workshop	
11:00-13:00	A:Consulting under supervision	B:Observing another team member
13:00-14:00	Lunch	
14:00-16:00	A:Observing another team member	B:Consulting under supervision
16:00-16:45	Catch up/skill of the week	
16:45-17:00	Workplace based assessment with one student	



### Workshops

Each workshop is themed and has a detailed tutorial guide is emailed in advance. The main focus of the workshop is consulting and role-play scenarios each week to work through.

### Consulting under supervision

Half of your group will consult with patients, under direct supervision, during the teaching surgery while the other half of the group is observing another team member. This could be a GP, nurse, HCA etc. The goal here is for students to observe how the practice works in real time. After lunch the halves will swap over. Therefore, in a GP3 day all students will get to consult every week and receive feedback from their GP tutor. We suggest booking 30 minute appointments for the student consultations initially. These can be face to face or remote and should be unselected patients. Students must be supervised by a GP

### Simulated Surgeries

The last day in each block comprises a simulated surgery where students consult with actors remotely via telephone. The cases from the surgery relate to material covered earlier in the block. It is a chance for students to consult on a wide range of presentations in a safe environment. This day takes place in your practices so you will need a room big enough to house 6 students and their GP tutor. You will also need a speaker phone for the simulated surgery.

### Year 3 Key Facts

- 4-6 students per group
- Alternate Tuesdays
- Payment £864/day
- £13,824/16 day placement

### Key requirements from the practice

- 1) A lead GP to facilitate the day
- 2) A GP/AHP for 2 students to observe each week in practice
- 3) A room large enough for the whole group for the workshops/catch ups



## Teaching Dates (Tuesdays) and Topics

Block A		
Week	Date	Topic
1	16-Sep-25	Respiratory
2	30-Sep-25	Gastrointestinal
3	14-Oct-25	Rheumatology
4	28-Oct-25	Renal
5	11-Nov-25	Dermatology
6	25-Nov-25	Ophthalmology and ENT
7	9-Dec-25	Emergencies in General Practice
8	06-Jan-26	Simulated Surgery (in practices)

Block B		
Week	Date	Topic
9	27-Jan-26	Cardiovascular
10	10-Feb-26	Endocrine
11	24-Feb-26	Neurology
12	10-Mar-26	Musculoskeletal
13	24-Mar-26	Urology
14	14-Apr-26	Abdominal presentations including domestic violence
15	28-Apr-26	Diabetes
16	12-May-26	Simulated Surgery (in practices)

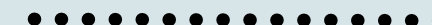
Year 3 Frequently asked questions	
Can more than one GP deliver the teaching?	Yes, although we would prefer no more than two regular teachers per block.
Can I change the timings of the day?	You can arrange this with the students. They must still receive a three hour workshop and a further three hours of teaching surgery and check-in/out.
If I have a GP trainee, can they help?	Yes, they can help with some components of the day but should not be the lead clinician and should not supervise the clinical component.
Will material for the workshop be provided?	Yes, we will provide detailed material for running the workshop... but feel free to innovate if you have your own ideas!

### Please note

All days take place in your practice

### Teacher Development

Year 3 Workshop: In person on  
Tuesday 9th September 2025



## Welcome to Year 4

GP4 – Primary Care runs for two blocks of 18 Wednesdays. We are extremely grateful to all our GPs who taught during 24/25. The student feedback was excellent with students particularly enjoying student-led consultations, thank you very much. With finals at the end of Year 4, the students are enthusiastic and keen to hone their consultation and clinical skills in preparation for their exams.

GP4 is an innovative longitudinal clerkship, integrating weekly primary care teaching within the students' hospital attachment. Students will be in their practice every Wednesday during the academic year. Half the students will come out in the first 18-week block and half in the second 18 week block. The emphasis is on experiential learning, embedding with your team, authentic tasks (such as phlebotomy, flu injections, HCA clinics), follow-up of patients and integration with secondary care.

Key elements GP4 placement:

- ◆ On a Wednesday in practice throughout the academic year (2x 18 weeks).
- ◆ 2 hours protected teaching time every week. 30 minutes protected preparation time for GP tutor.
- ◆ At least one student-led patient consultation per week
- ◆ All learning materials provided
- ◆ 2 pairs of students per practice
- ◆ Weekly email to GP teachers and students
- ◆ Assessments—1 Mini-Cex, 1 CBD and 2 reviews
- ◆ Teaching break during Christmas, Easter and summer holidays

The infographic below provides further information.

Please let us know your availability for teaching GP4 by completing the [online link](#).

With best wishes from your Year 4 GP leads



*Kimberly Bruce*

**Dr Kimberly Bruce**

Year 4 GP Co-lead



*Lizzie Grove*

**Dr Lizzie Grove**

Year 4 GP Co-lead



GP1

GP2

GP3

GP4

GP5





# Year 4 General Practice Placement

## Quick Reference Guide 2025-26

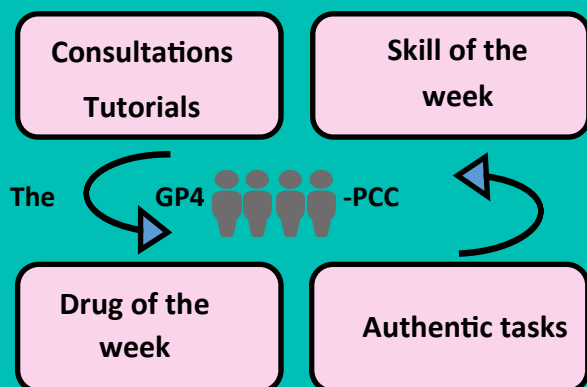
For more information on each year, visit our website: <https://www.bristol.ac.uk/primaryhealthcare/teaching/>



GP4 will run across the entire academic year. Half the students will come out in the first 18-week block and half in the second 18-week block. Students will spend every Wednesday in General Practice during their Complex Medicine for Older People (CMOP) hospital attachment. In total, each student will be in practice for 18 Wednesdays.

Students will have two half-day central teaching sessions during the 18 week block—see dates on the next page. They will be in surgery on the morning of these dates.

### Typical day in practice - The building blocks 2.5 hours teaching time plus observation



### How the placement works

Each Wednesday **four students** will come to your practice. We would like students to have 2.5 hours protected teaching time and at least one student-led patient consultation per student each week. Practices have flexibility on how to organise these activities.

#### Sample Outline Timetable 2.5 hours teaching time

Morning	GP Preparation time & Check in
	Drug of the week
	Student-led surgery
Middle of the day	Self-directed learning / Home visits/ Tutorial fortnightly/Lunch
Afternoon	Authentic tasks / Student HCA clinic
End of the day	Check out (brief review of the day)
	Skill of the week

**2.5 hours formal teaching / week** All learning material will be provided. This includes check-in, check-out, drug of the week, skill of the week, assessments and practice OSCE tutorials (fortnightly).

**One student-led consultation per student every Wednesday** - student-led surgeries (in pairs).

**Learning Disability Annual Health Check** - students should observe or consult, learning materials are provided

#### Year 4 Student schematic

Academy 1			Academy 2	
Newborn	Reproductive Health and Care of the	Mental Health	Child Health	Complex Medicine for Older People
No Primary Care			Primary Care and Community 1 day/week (Wednesday)	

**Assessment** 2 reviews, 1 Mini-Cex, 1 CBD/student

**Authentic tasks** 4th year students should be an asset to the practice. They are able to assist in health assessments and authentic tasks, e.g. phlebotomy.

#### Year 4 key facts

- 4 students every Wednesday
- 18 days per placement
- Payment of £20,128 / 36 weeks
- At least one additional room required for students



# GP Teaching Dates (Wednesdays)

Block One Placement				Assessment		Teacher Development		Block 2 Placement			
Week	Date	Week	Date	MiniCex x1 CBD x1 Review 1 Review 2		Year 4 Workshop:  In person on Tuesday 02-Sep-25 (morning)		Week	Date	Week	Date
1	03-Sep-25	10	05/11/25	<div>Online GP4-PCC—Central sessions</div> <div>1 (17-Sept-25 and 04-Feb-26) (pm only) Remote consulting, Examination and history</div> <div>2 (03-Dec-25 and 06-May-26) (pm only) Travel medicine and Medication updates</div>		<div>Holidays</div> <div>Christmas: 20-Dec-25—04-Jan-26 Easter: 28-Mar-26—12-Apr-26</div>		1	21-Jan-26	10	25-Mar-26
2	10-Sep-25	11	12/11/25					2	28-Jan-26	11	15-Apr-26
3 (am only)	17-Sep-25	12	19/11/25					3 (am only)	04-Feb-26	12	22-Apr-26
4	24-Sep-25	13	26/11/25					4	11-Feb-26	13	29-Apr-26
5	01-Oct-25	14 (am only)	03/12/25					5	18-Feb-26	14 (am only)	06-May-26
6	08-Oct-25	15	10/12/25	<div>Key</div> <div>Whole cohort teaching in pm</div> <div>Mid &amp; End point reviews</div>				6	25-Feb-26	15	13-May-26
7	15-Oct-25	16	17/12/25					7	04-Mar-26	16	20-May-26
8	22-Oct-25	17	07/01/26					8	11-Mar-26	17	27-May-26
9	29-Oct-25	18	14/01/26					9	18-Mar-26	18	03-Jun-26

Year 4 Frequently Asked Questions	
How many students?	2 pairs (4 students) of students
Can more than one GP deliver the teaching?	One GP needs to take responsibility, oversee the teaching and provide continuity. Other GPs, team members and allied health professionals can contribute to teaching certain elements within their expertise e.g. drug of the week and skill of the week. It is hoped that all team members will welcome the students and help to facilitate their learning.
What if I'm away during the 18 weeks?	We appreciate you will have annual leave. Please arrange for a colleague to organise and supervise the students when you are away.
What are authentic tasks?	Tasks that need to be done, e.g. phlebotomy, routine health checks for patients with learning difficulty

## Welcome to Year 5

Students come to you in pairs for a block apprentice-style placement as part of their 'Preparing for Professional Practice' course. The students **come for a 9 week placement starting in either end of October, January or March**. This gives the students the opportunity to really embed into your team and contribute to the day to day running of the practice. There is flexibility in how you organize the placement, **students are required to do 6 sessions, this could be over 3 or 4 days**. You will need to provide opportunities for them to consult with patients, observe them, give feedback and provide general supervision.

**Students will be out of practice for the whole day every Wednesday** for group teaching and private study. For practices also wishing to host Year 4 students, please note that this means there will be no overlap with Year 5 teaching.

Payment for the placement is £9,324 per pair of students. The infographic below provides further information, and we will be running an in person workshop in September.

Please let us know your availability for GP5 by completing the [online link](#).

With best wishes



**Dr Veronica Boon**

Year 5 GP Co-Lead



**Dr Lizzie Grove**

Year 5 GP Co-lead

GP5

GP1

GP2

GP3

GP4

GP5



# Year 5 General Practice Placement

## Quick Reference Guide 2025-26

For more information on each year, visit our website: <https://www.bristol.ac.uk/primaryhealthcare/teaching/>



.....

In Year 5 students will undertake a 9 week block placement in General Practice. They will have completed finals at the end of Year 4.

It is an apprentice-style placement as part of their Preparing for Professional Practice (PPP) course which also includes 9 weeks of both ward based care and acute and critical care. The main focus of the primary care placement is on the student consulting with patients independently and practising decision making.

.....

### Aim of the Placement

To prepare students for working as an F1 doctor by learning in the Primary Care setting.

### How the Placement Works

- 1 pair of students for 9 weeks starting in November, January or March
- Apprenticeship-style placement
- No prescribed learning themes
- NOT in practice on a Wednesday
- 6 sessions over 3 or 4 days
- Minimum 5 student—led surgeries and 1 Joint surgery
- 2 hours protected time for student project

### Student led Surgery

Students have their own list and room. They can consult in pairs or alone followed by a senior review after each patient. The supervising tutor will need an appointment blocked for each patient the student sees and an extra block at the start and end of their surgery to check-in/debrief with students.

### Joint Surgery/Tutorial

Students consult individually with direct observation and feedback from student colleague and supervisor. This time can also be used to complete assessments and discuss complex cases/presentations. The supervising tutor will need a whole session blocked for this.

### Example timetable for a week in practice

	Monday	Tuesday	Wednesday	Thursday	Friday
AM	Student-led Surgery	Private study	Cluster Based Teaching (CBT)	Student-led Surgery	Student-led Surgery
Lunch	Home Visit	Private study		CAPs sign-off	Practice Meeting
	Project			Project	Project
PM	Student-led Surgery	Private study	CBT preparation Outside the Box Project	Joint Surgery	Student-led Surgery

### Student—led Project

The students will have a minimum of 2 hours per week to plan and deliver a community based project.

### Allied Health Professionals (AHPs)

Depending on previous experience and interests, some students may want to spend time with AHPs. They will also need to get some clinical skills signed off.

### Assessment

The students need to demonstrate satisfactory attendance and engagement with the placement. The students will also need to complete two satisfactory Case Based Discussions (CBD) and two Mini-CEX's during the placement.

### Year 5 key facts

- 1 pair of students
- £9,324/block
- 9 wk block, 6 sessions/wk



# GP and Academy Teaching Dates

*"It's a pleasure to have a pair of fifth years embarking on the start of their career, feedback has been really positive from everyone in the practice."*

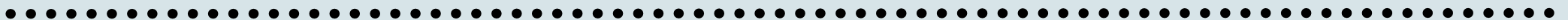
- YEAR 5 GP TEACHER

Year 5 Teaching Dates	
Block	Dates
A	30 Oct 25—9 Jan 26
B	12 Jan 25—13 Mar 26
C	23 Mar—5 Jun 26

Teacher Development
Year 5 Workshop: In person on Tuesday 23-Sep-25 AM
*Holidays
<b>Christmas: 20-Dec-25—04-Jan-26</b> inclusive <b>Careers Week: 16 to 20-Mar-26</b> (students out of practice) <b>Easter: 28-Mar-26 to 12-Apr-26</b> inclusive

## Year 5 Frequently Asked Questions

How many students?	We would like you to take <b>one pair</b> of students per block. It might be possible for you to take a single student but the payment will be half of that advertised. If you have capacity you are welcome to have a second pair of students per block but they will need to have their own supervisor and consult independently to the other student pair.
Will students need their own room?	Yes, we would suggest that students consult independently in pairs or alone for at least 5 sessions a week. We would expect them to have their own list of patients to consult prior to a senior review.
Can more than one GP deliver the teaching?	One GP needs to take responsibility, oversee the teaching and provide continuity. Other GPs and allied health professionals can contribute to teaching. It is hoped that all team members will welcome the students and help to facilitate their learning.
What if I'm away during the 9 weeks?	We appreciate you will have annual leave. Please arrange for a colleague to organise and supervise the students when you are away.
Can I change the timings of the day?	You can arrange this with the students. We appreciate that a standard GP day is longer than an average working day. We are happy for students to start later and finish earlier on some days as long as they complete 6 sessions per week.
How can I find out more information about Year 5?	Visit the Year 5 teaching page of our website at: <a href="https://www.bristol.ac.uk/primaryhealthcare/teaching/teaching-in-practice-by-year/five/">https://www.bristol.ac.uk/primaryhealthcare/teaching/teaching-in-practice-by-year/five/</a>
Who do I contact if I still have queries?	Please contact the Primary Care teaching team: <a href="mailto:phc-teaching@bristol.ac.uk">phc-teaching@bristol.ac.uk</a>





# Community GP Leads

GP1

The teaching team is continually seeking new ways to improve communication with our teaching practices and the support that we provide. Community GP leads are the main point of contact for local practices that are considering either starting teaching or increasing their teaching, but still have questions.

GP2

The Community GP Lead team work closely with the Year Leads and can be a point of contact for those teaching practices that have encountered issues with delivering their teaching.

GP3

Please do not hesitate to contact us if you have anything you wish to discuss

With best wishes

GP4

GP5



**Dr Imogen Llewellyn**

Somerset Lead

[Imogen.llewellyn@bristol.ac.uk](mailto:Imogen.llewellyn@bristol.ac.uk)



**Dr Karen Pond**

Gloucestershire Lead

[karen.pond@bristol.ac.uk](mailto:karen.pond@bristol.ac.uk)